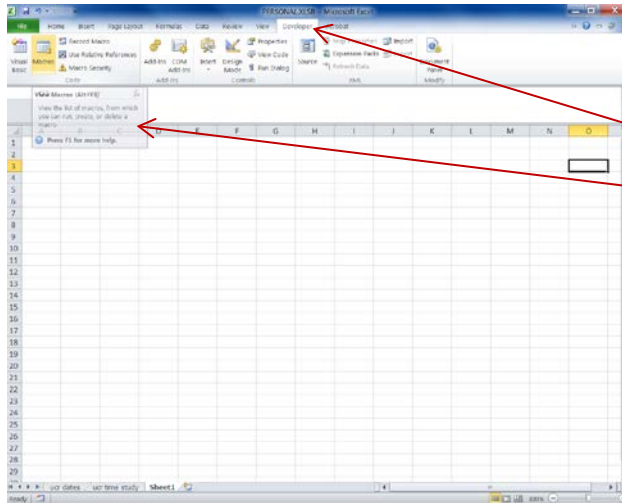


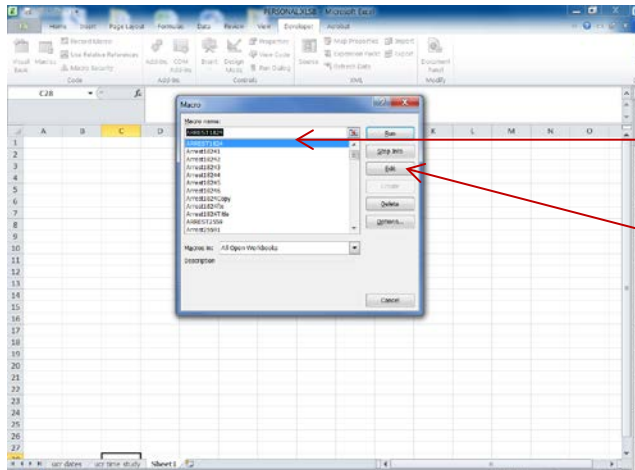
# How to Edit / Run a Macro in Excel

## How to Edit a Macro



Select "Developer" Tab

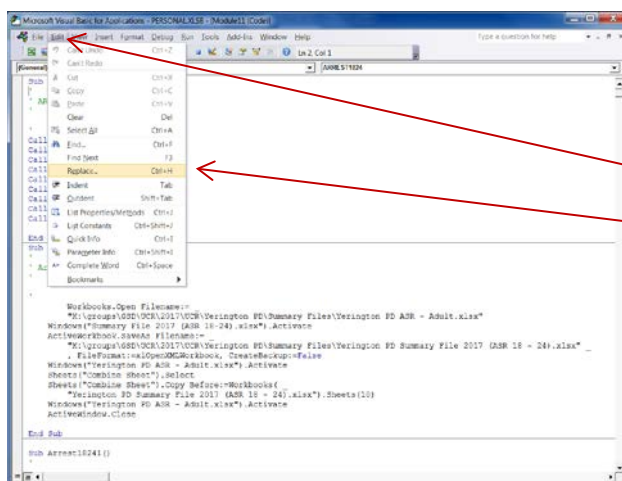
Click "Macros"



Select Macro

(Note: Master Commands are in ALL CAPS)

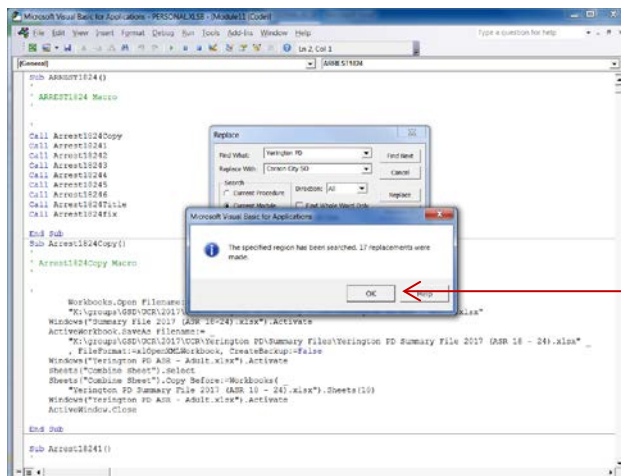
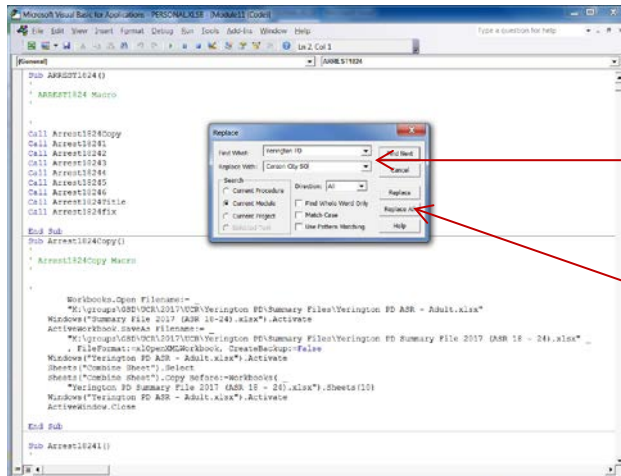
Click "Edit"



Click "Edit"

Click "Replace"

## How to Edit / Run a Macro in Excel



## How to Run a Macro after Editing

